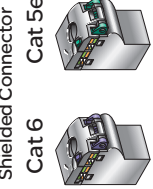
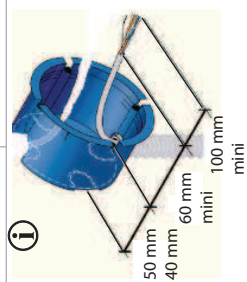
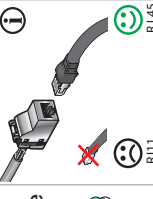


Odace

Shielded Connector
Cat 6

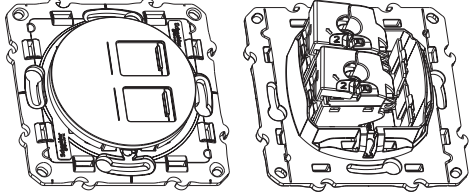


①

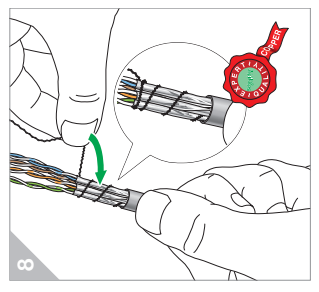
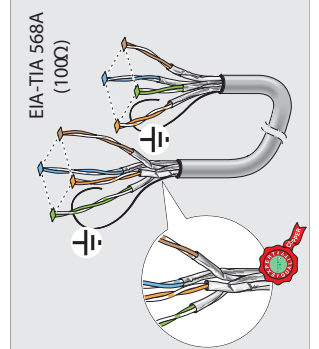
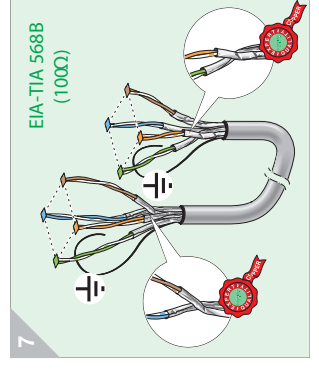
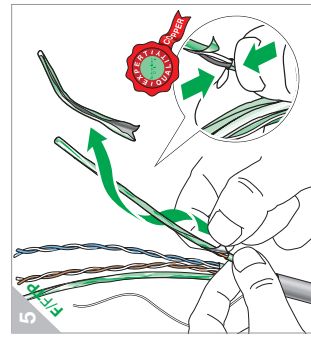
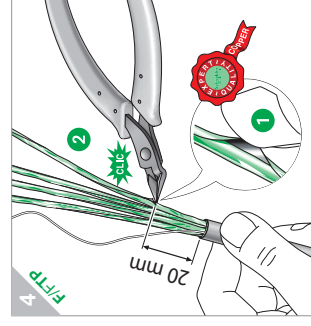
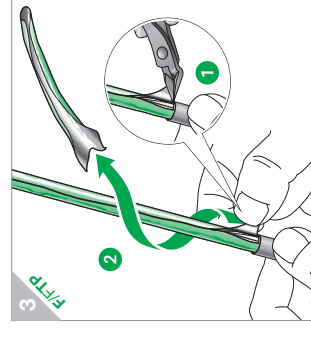
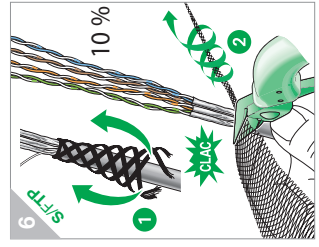
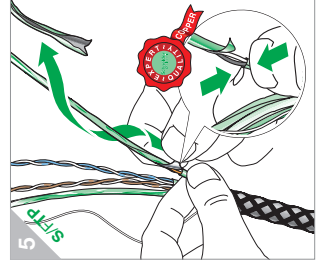
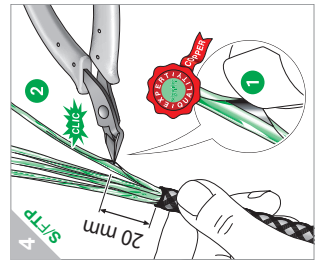
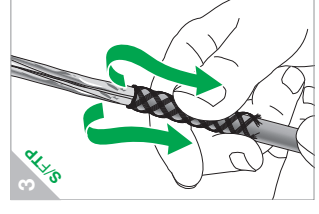
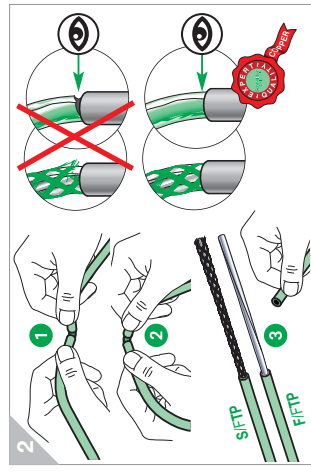
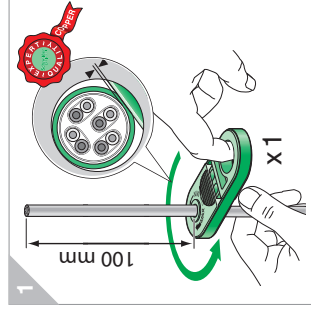
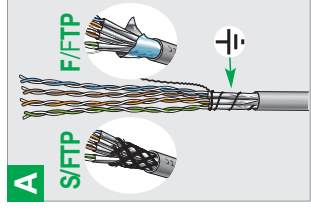
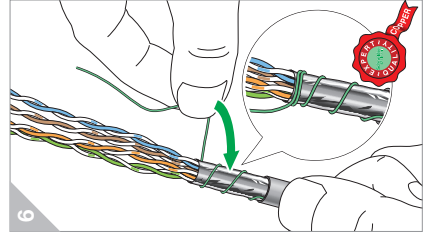
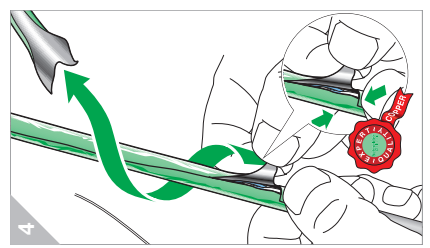
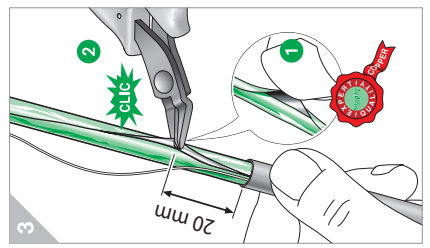
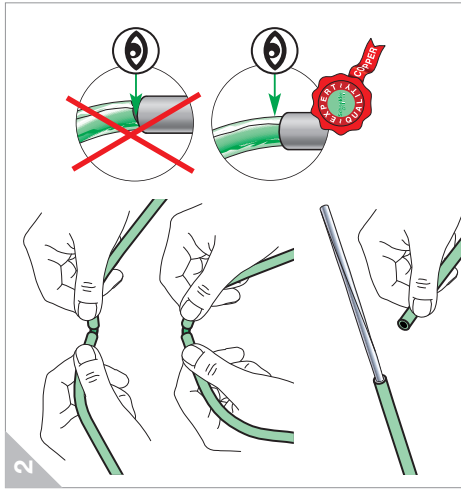
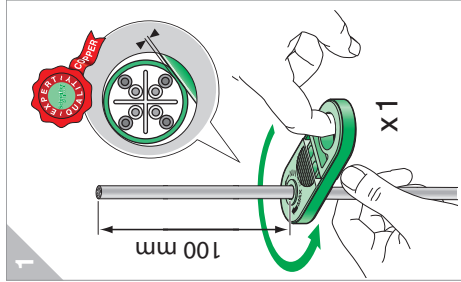
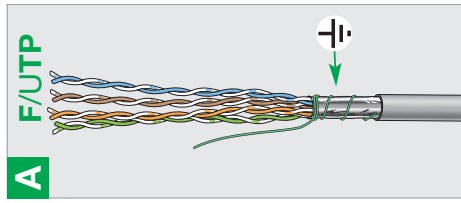
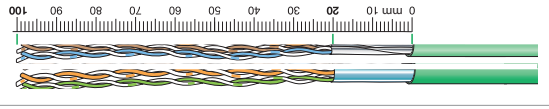
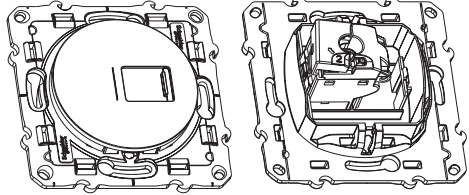


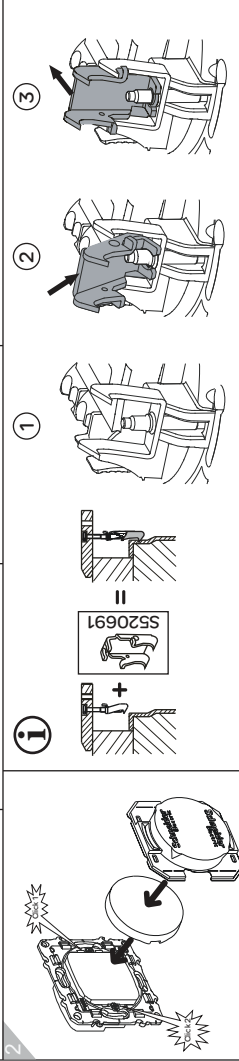
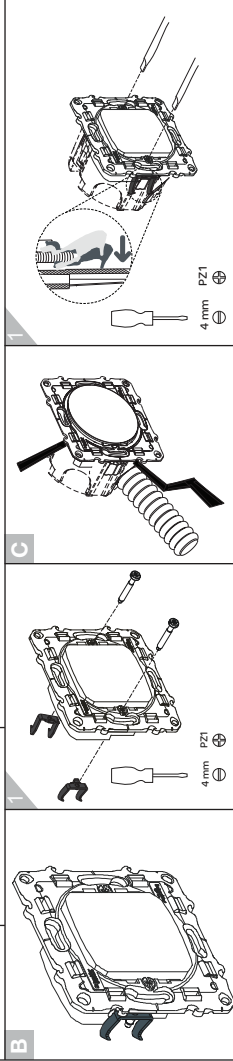
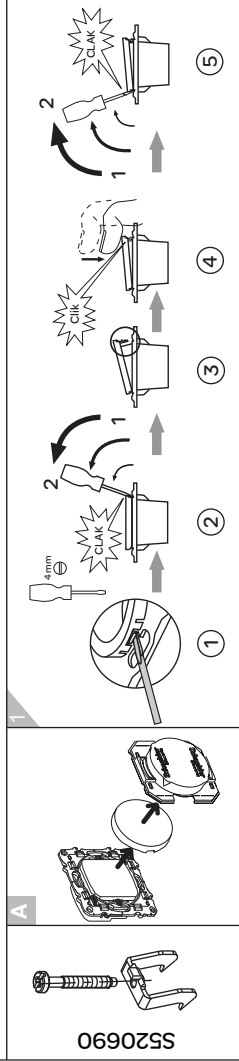
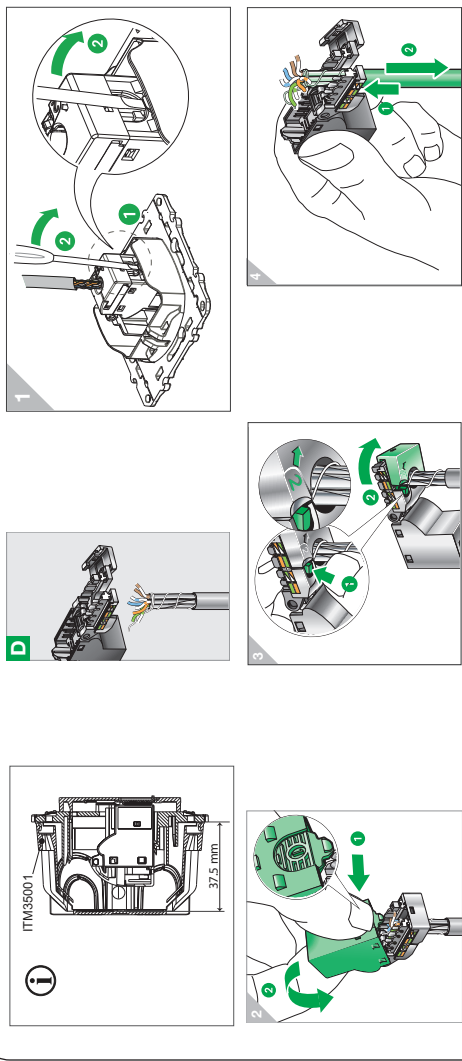
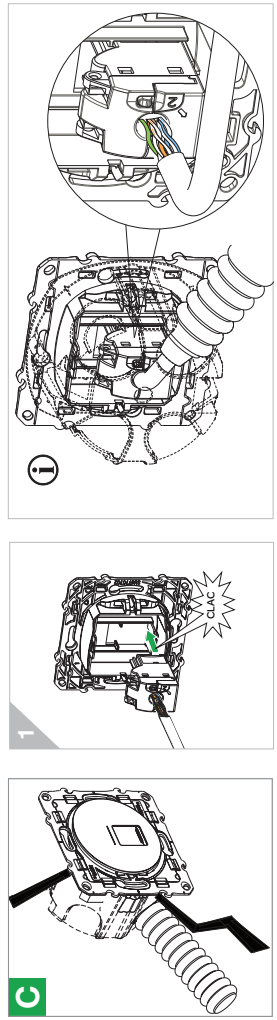
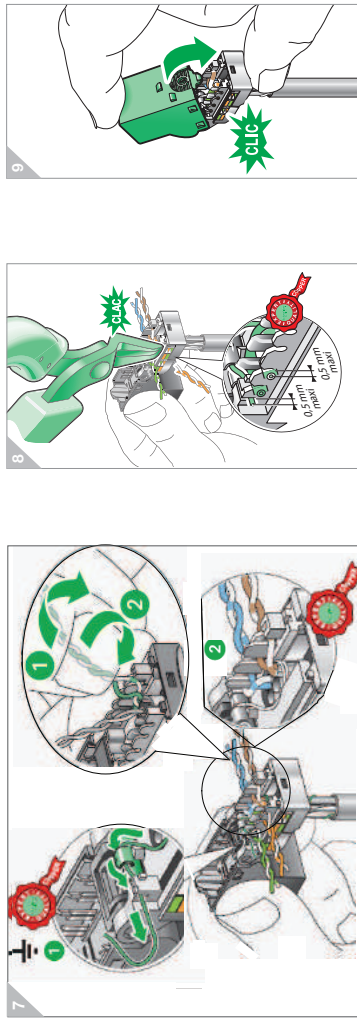
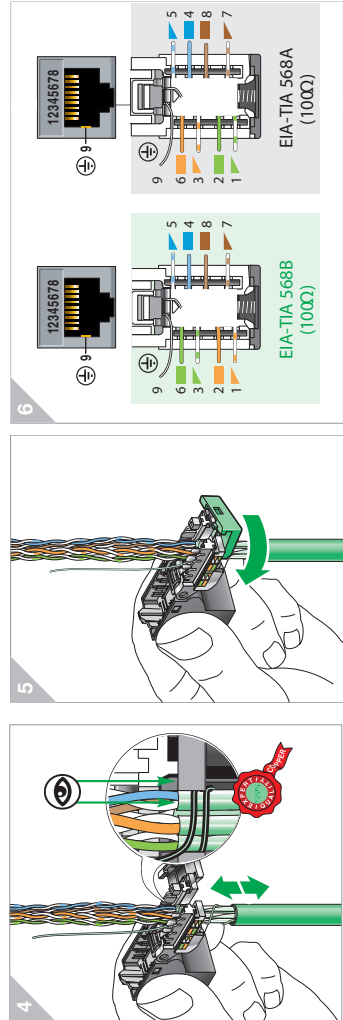
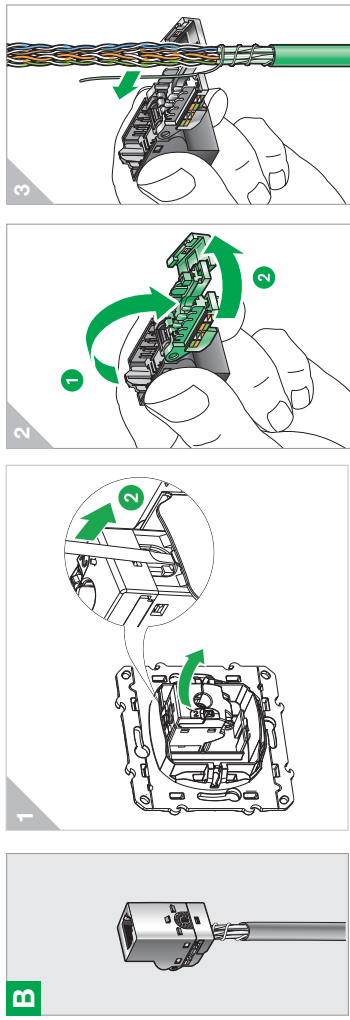
①

S5---486



S5---476





en This product must be installed, connected and used in accordance with applicable standards and/or installation regulations. As standards, specifications and designs develop from time to time, always ask for confirmation of the information given in this publication.

nl Dit product moet geïnstalleerd, aangesloten en gebruikt worden in overeenstemming met de toepasselijke normen en/of installatievoorschriften. Omdat normen, specificaties en ontwerpen kunnen evolueren in de tijd, altijd vragen om bevestiging van de informatie in deze publicatie.

pt Este produto deve ser instalado, ligado e utilizado de acordo com as normas aplicáveis e/ou regras de instalação. Dado que as normas, especificações e esquemas vão sendo atualizados periodicamente, solicite sempre a confirmação da informação contida nesta publicação.

fr Ce produit doit être installé, connecté et utilisé en conformité avec les normes applicables et/ou règles de l'installation. Du fait que les normes, les spécifications et les schémas peuvent être modifiés, nous vous recommandons de vérifier que la documentation de cette publication soit mise à jour.

es Este producto debe ser instalado, conectado y utilizado de acuerdo con las normas aplicables y/o las reglas de instalación. Dado que las normas, las especificaciones y los diseños se desactualizan de vez en cuando, se recomienda asegurarse que la información dada en esta publicación sea la correcta.

VDI560014